



# Automatic Inserting Machine

## 自动插件机

## Automatic Multi-head Inserting Machine-Mulserter 200

### 全自动多头插件机 Mulserter-200



Automatic Multi-head Inserting Machine, Model:Mulserter 200, is designed to insert Eyelet pins, Gripper pins, Round pins, Lugs and odd shaped components into PCBs in accordance with Insertion Programs made by machine itself.

The operator can manage the usage of head tools selectively with the combination of three different kinds of Insertion Heads according to the production schedule. The main elements of this model are machine itself & PCB feeding system, and the machine consists of Insertion Head, Clinch Unit, X-Y Table, Positioning Unit, Component Feeding Unit, LCS system, PC and Electric Parts. This model has advantage of reliable performance & low noise & economical usage with the simplicity of mechanical parts and an easy operating system.

全自动多头插件机设备Mulserter 200主要用于在PCB上插入各种元器件 (Eyelet Pin, Gripper Pin, Round Pin, Lug以及其他异型件, 插件的程序可在机器上编制。

用户可根据生产要求有选择的使用三种不同的插入头, 此型号由主机和PCB传送系统组成。主机由插入头、Clinch单机, X-Y工作台, 激光定位校正系统, 元器件传送系统, PC和电气部份组成。

Mulserter 200的特点有: 稳定可靠、经济实用、容易操作和低噪音。

# Mulserter-200

## Main Feature

### MONITORING FUNCTION

It displays the production information, trouble message, and other valuable operating information on the monitor.

### PROGRAM GENERATING FUNCTION

System makes the program by itself, and also the operator can easily output, input, edit and save the data with PC.

### DIAGNOSTIC FUNCTION

When the M/C has trouble, error message appears on the monitor automatically.

### OUTER COMMUNICATION FUNCTION

It is very convenient for operator to handle RS-232C

### EASY OPERATING FUNCTION

It is very convenient for the operator to handle M/C by operating software on panel and dualism with key board being established.

### ECONOMIC USAGE

The customer can reduce the cost of purchasing M/C because only one M/C because only one M/C can excute to insert three different kinds of components.

### 监控功能

显示器可显示产品信息, 出错信息和各种可用操作信息。

### 编程功能

系统可在线编程, 操作者可便捷的通过PC进行输出、输入, 编辑和存储数据功能。

### 诊断功能

当机器出现故障时, 机器会自动的在显示器上显示出错信息, 以便于及时排除。

### 外部通讯功能

通过RS-232C接口, 可便捷的与外界通讯。

### 简单方便操作功能

操作者可在操作面板上方便的按照程序运行机器。  
通过操作软件, 操作者可方便的操控机器

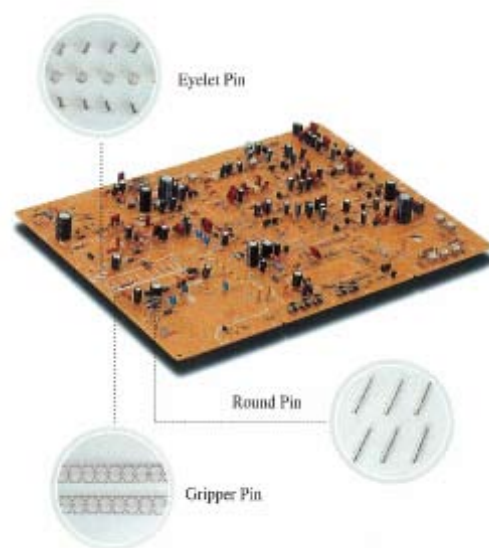
### 经济实用

用户可使用一台机器处理最多三种不同类型的元器件以达到经济之目的, 节省采购成本。

## MAIN SPECIFICATIONS

| NO  | Specification                           | Mulserter 200  |
|-----|---|--|
| 1.  | Applicable PCB Size(L×W)                | Min:100×80(mm)/Max.460×360(mm)   |
| 2.  | PCB Transfer Direction                  | L→ R / R → L   |
| 3.  | Insertion Speed                         | 0.27~0.4sec. per component<br>(variable as component)                      |
| 4.  | Table Speed                             | 22.5M per min.   |
| 5.  | PCB Loading Time                        | 5.5sec   |
| 6.  | Component Kinds of Insertion applicable | Three kinds  |
| 7.  | Component Feeding Method                | Bowl Feeding   |
| 8.  | Clinch                                  | Quadrisection/Hexasection  |
| 9.  | M/C color                               | White Gray or Blue   |
| 10. | M/C Dimension (L×D×H)                   | 2210(L) ×1225(D) ×2000(H)mm  |
| 11. | M/C Weight                              | 1000kg   |
| 12. | PC (as controller)                      | Pentium III - 1GHz<br>DSP Card, Disk on Module (32MB)<br>15" Color Monitor |
| 13. | Air Source                              | 5~6 kgf/cm2  |
| 14. | Air Consumption                         | 656Nℓ/ min   |
| 15. | Electric Power                          | 220V±10%/50~60Hz/1.7kw   |
| 16. | Temperature                             | 10℃~35℃  |
| 17. | Humidity                                | 30~70%   |
| 18. | LCS                                     | Automatic Coordinates<br>Collection System by Laserbeam                    |

## INSERTED FORM INTO PCB



## Automatic Terminal Inserting Machine Mulserter 300T 全自动端子插件机 Mulserter 300T



Automatic Multi-Inserting Machine, Model: Mulserter 300T, is designed to insert Lugs, Taps, Fuse Holders, Terminals and odd shaped components into PCBs in accordance with Insertion Program made by the machine itself and not to be affected by the shape, direction and size of components.

This machine consists of a Rotary Table and Heads, so the operator is able to select three different kinds of components regardless of a direction.

Convenient to operate via the Touch Screen, which is operated using the Windows System.

全自动多功能插件机Mulserter 300T, 用于将插件, 保险丝座, 端子, 异型元器件插入PCB中, 无需考虑元器件的外型, 方向和尺寸。插件的程序可在机器上编制。 Mulserter 300T包括旋转工作台和插入头, 便于用户插入三种不同类型的异型件而无须考虑异型件的方向性。方便于操作者, 该机的操作是在WINDOWS 界面下的触摸屏上进行。



# Mulserter-300T

## Main Feature

### MONITORING FUNCTION

It displays the production information, trouble message, and other valuable operating information on the monitor. Very convenient to operate via the Touch Screen. Special switch is installed for the operator's convenience when programming.

### PROGRAM GENERATING FUNCTION

System makes the program by itself, and also the operator can easily output, input, edit and save the data with PC.

### DIAGNOSTIC FUNCTION

When the M/C has trouble, error message appears on the monitor automatically.

### OUTER COMMUNICATION FUNCTION

It is very convenient for operator to handle RS-232C

### EASY OPERATING FUNCTION

It is very convenient for the operator to handle M/C by operating software on panel and dualism with key board being established.

### ECONOMIC USAGE

The customer can reduce the cost of purchasing M/C because only one M/C because only one M/C can excute to insert three different kinds of components.

### TABLE TURNING FUNCTION

Each head can insert components at 4 direction

### 监控功能

显示器可显示产品信息, 出错信息和各种可用操作信息, 该机器提供更方便的触摸屏操作功能, 并另外安装了一个特殊开关供操作者在机使用。

### 编程功能

系统可在线编程, 操作者可便捷的通过PC进行输出、输入, 编辑和存储数据功能。

### 诊断功能

当机器出现故障时, 机器会自动的在显示器上显示出错信息, 以便于及时排除。

### 外部通讯功能

通过RS-232C接口, 可便捷的与外界通讯。

### 简单方便操作功能

操作者可在操作面板上方便的按照程序运行机器。  
通过操作软件, 操作者可方便的操控机器

### 经济实用

用户可使用一台机器处理最多三种不同类型的元器件以达到经济之目的, 节省采购成本。

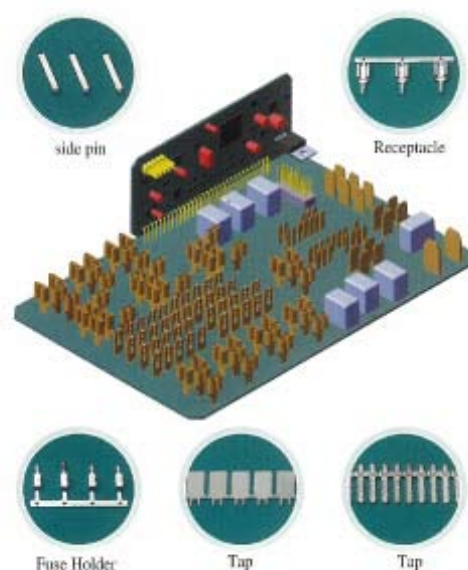
### 工作台旋转功能

每个插入头以四个方向插入元器件

## MAIN SPECIFICATIONS

| NO  | Specification                           | Mulserter 300T  |
|-----|---|---|
| 1.  | Applicable PCB Size(L×W)                | Min:100×80(mm)/Max.330×260(mm)  |
| 2.  | PCB Transfer Direction                  | L→ R / R → L  |
| 3.  | Insertion Speed                         | 0.27~0.65sec. per component<br>(variable as component)                      |
| 4.  | Table Speed                             | 22.5M per min.  |
| 5.  | PCB Loading Time                        | 5sec.   |
| 6.  | Component Kinds of Insertion applicable | Three kinds   |
| 7.  | Component Feeding Method                | Roll Feeding  |
| 8.  | Clinch                                  | Quadrisection/Hexasection or press fit                                      |
| 9.  | M/C color                               | White Gray or Blue  |
| 10. | M/C Dimension (L×W×H)                   | 2210(L) ×1350(W) ×2000(H)mm   |
| 11. | M/C Weight                              | 1000kg  |
| 12. | PC (as controller)                      | Pentium III - 1GHzDSP Card,<br>HDD 80GB<br>14" TFT LCD Touch Screen Monitor |
| 13. | Air Source                              | 5~6 kgf/cm <sup>2</sup>   |
| 14. | Air Consumption                         | 656Nl/ min  |
| 15. | Electric Power                          | 220V±10%/50~60Hz/1.7kw  |
| 16. | Temperature                             | 10℃~35℃   |
| 17. | Humidity                                | 30~70%  |
| 18. | LCS                                     | Automatic Coordinates<br>Collection System by Laserbeam                     |

## INSERTED FORM INTO PCB



## Automatic SB Fuse Inserting Machine Mulserter-2000S



Automatic SB Fuse Insertion Machine, Model: MULSERTER-2000S, automatically inserts SB fuses (or relay) into a J/B (Junction Box). It equips the J/B on the Table Jig for manual insertion, and then uses a pallet and processes loading/unloading automatically with a conveyer.

全自动SB Fuse 插件机, 型号: MULSERTER-2000S 自动将SB保险丝(或继电器)插入J/B (接线盒) 利用本装备可手动装载和插入 J/B到 Table 上的夹具, 并可通过 Pallet和传送带自动实现装载/卸载。

# Mulserter-2000S

## Main Feature

### MONITORING FUNCTION

It displays the production information, trouble message, and other valuable operating information on the monitor. Very convenient to operate via the Touch Screen. Special switch is installed for the operator's convenience when programming.

### PROGRAM GENERATING FUNCTION

System makes the program by itself, and also the operator can easily output, input, edit and save the data with PC.

### DIAGNOSTIC FUNCTION

When the M/C has trouble, error message appears on the monitor automatically.

### OUTER COMMUNICATION FUNCTION

It is very convenient for operator to handle RS-232C

### EASY OPERATING FUNCTION

It is very convenient for the operator to handle M/C by operating software on panel and dualism with key board being established.

### ECONOMIC USAGE

The customer can reduce the cost of purchasing M/C because only one M/C because only one M/C can excute to insert six different kinds of components.

### TABLE TURNING FUNCTION

Each head can insert components at 3 direction.

### 监控功能

显示器可显示产品信息, 出错信息和各种可用操作信息, 该机器提供更方便的触摸屏操作功能, 并另外安装了一个特殊开关供操作者在机使用。

### 编程功能

系统可在线编程, 操作者可便捷的通过PC进行输出、输入, 编辑和存储数据功能。

### 诊断功能

当机器出现故障时, 机器会自动的在显示器上显示出错信息, 以便于及时排除。

### 外部通讯功能

通过RS-232C接口, 可便捷的与外界通讯。

### 简单方便操作功能

操作者可在操作面板上方便的按照程序运行机器。通过操作软件, 操作者可方便的操控机器

### 经济实用

用户可使用一台机器处理最多六种不同类型的元器件以达到经济之目的, 节省采购成本。

### 工作台旋转功能

每个插入头以三个方向插入元器件

## MAIN SPECIFICATIONS

| NO  | Specification                           | Mulserter 2000S   |
|-----|---|---|
| 1.  | Applicable PCB Size(L×W)                | Max.250×250(mm)   |
| 2.  | Insertion Speed                         | 0.65sec. per component<br>(variable as component)                           |
| 3.  | Table Speed                             | 22.5M per min.  |
| 4.  | Loading Method                          | Manual  |
| 5.  | Component Kinds of Insertion applicable | Six kinds   |
| 6.  | Component Feeding Method                | Bowl Feeding  |
| 7.  | M/C color                               | White Gray or Blue  |
| 8.  | M/C Dimension (L×D×H)                   | 1150(L) ×2040(D) ×1650(H)mm   |
| 9.  | M/C Weight                              | 1700kg  |
| 10. | PC (as controller)                      | Pentium III - 1GHzDSP Card,<br>HDD 80GB<br>14" TFT LCD Touch Screen Monitor |
| 12. | Air Source                              | 5~6 kgf/cm <sup>2</sup>   |
| 13. | Air Consumption                         | 656Nℓ/ min  |
| 14. | Temperature                             | 10℃~35℃   |
| 15. | Humidity                                | 30~70%  |
| 16. | LCS                                     | Automatic Coordinates<br>Collection System by Laserbeam                     |

## INSERTED FORM INTO PCB



## Automatic Mini Fuse Inserting Machine Mulserter-2000M



Automatic Mini Fuse Insertion Machine, Model: MULSERTER-2000M, automatically inserts Mini fuses into a J/B (Junction Box). It equips the J/B on the Table Jig for manual insertion. And then uses a pallet and processes loading/ unloading automatically with a conveyer.

全自动微型保险丝插件机，型号2000M自动将微型保险丝插入J/B（接线盒）中利用本装备可手动装卸和插入J/B到Table上的夹具。并可通过Pallet和传送带自动实现装载/卸载。



# Mulserter-2000M

## Main Feature

### MONITORING FUNCTION

It displays the production information, trouble message, and other valuable operating information on the monitor. Very convenient to operate via the Touch Screen. Special switch is installed for the operator's convenience when programming.

### PROGRAM GENERATING FUNCTION

System makes the program by itself, and also the operator can easily output, input, edit and save the data with PC.

### DIAGNOSTIC FUNCTION

When the M/C has trouble, error message appears on the monitor automatically.

### OUTER COMMUNICATION FUNCTION

It is very convenient for operator to handle RS-232C

### EASY OPERATING FUNCTION

It is very convenient for the operator to handle M/C by operating software on panel and dualism with key board being established.

### ECONOMIC USAGE

The customer can reduce the cost of purchasing M/C because only one M/C can excute to insert up to six different kinds of components.

### TABLE TURNING FUNCTION

Each head can insert components at 2 direction.

### 监控功能

显示器可显示产品信息, 出错信息和各种可用操作信息, 该机器提供更方便的触摸屏操作功能, 并另外安装了一个特殊开关供操作者在机使用。

### 编程功能

系统可在线编程, 操作者可便捷的通过PC进行输出、输入, 编辑和存储数据功能。

### 诊断功能

当机器出现故障时, 机器会自动的在显示器上显示出错信息, 以便于及时排除。

### 外部通讯功能

通过RS-232C接口, 可便捷的与外界通讯。

### 简单方便操作功能

操作者可在操作面板上方便的按照程序运行机器。  
通过操作软件, 操作者可方便的操控机器

### 经济实用

用户可使用一台机器处理最多六种不同类型的元器件以达到经济之目的, 节省采购成本。

### 工作台旋转功能

每个插入头以二个方向插入元器件

## MAIN SPECIFICATIONS

| NO  | Specification                           | Mulserter 2000M   |
|-----|---|---|
| 1.  | Applicable PCB Size(L×W)                | Max.250×250(mm)   |
| 2.  | Insertion Speed                         | 0.55sec. per component<br>(variable as component)                           |
| 3.  | Table Speed                             | 22.5M per min.  |
| 4.  | Loading Method                          | Manual  |
| 5.  | Component Kinds of Insertion applicable | Six kinds   |
| 6.  | Component Feeding Method                | Bowl Feeding  |
| 7.  | M/C color                               | White Gray or Blue  |
| 8.  | M/C Dimension (L×D×H)                   | 1550(L) ×1573(D) ×1658(H)mm   |
| 9.  | M/C Weight                              | 1600kg  |
| 10. | PC (as controller)                      | Pentium III - 1GHzDSP Card,<br>HDD 80GB<br>14" TFT LCD Touch Screen Monitor |
| 12. | Air Source                              | 5~6 kgf/cm <sup>2</sup>   |
| 13. | Air Consumption                         | 656Nℓ/ min  |
| 14. | Temperature                             | 10℃~35℃   |
| 15. | Humidity                                | 30~70%  |
| 16. | LCS                                     | Automatic Coordinates<br>Collection System by Laserbeam                     |

## INSERTED FORM INTO PCB



## Automatic Terminal Inserting Machine Mulserter-2000T 全自动端子插件机Mulserter-2000T



Automatic Terminal Inserting Machine. Model:Mulserter 2000T, is designed to insert terminals and odd shaped components into PCBs in accordance with Insertion Programs made by machine itself.

The user can manage the usage of head tools selectively with the combination of three different kinds of Insertion Heads according to his production schedule. The main elements of this model are machine itself & PCB feeding system, and the machine consists of Insertion Head, Clinch Unit, X-Y Table, Turn and Positioning Unit, Component Feeding Unit, LCS system, PC and Electric Parts. Since this model performs in SERVO & CAM system, it has advantage of reliable performance & Low noise & economical usage with the simplicity of mechanical parts and easy operating system.

全自动端子插件机设备, 型号: Mulserter 2000T,通过机器的插入程序实现自动将各类端子和其他异型端子插入PCB。

使用者可根据实际生产计划, 有选择的使用三种不同种类插入头。此型号由主机和PCB传送系统构成, 主机由插入头, Clinch单元、X-Y工作台、旋转和定位单元、元器件传送单元、LCS系统、PC和电气部件构成、因为该型号设备使用伺服和CAM控制系统、所以有良好的可靠性、低噪音及经济性, 且机械部件简单, 操作系统简便的优良特性。

# Mulserter-2000T

## Main Feature

### RELIABLE SYSTEM

High-speed insertion and stability performed by SERVO&CAM system

### MONITORING FUNCTION

It displays the production information, trouble message, and other valuable operating information on the monitor.

### PROGRAM GENERATING FUNCTION

System makes the program by itself, and also the operator can easily output, input, edit and save the data with PC.

### DIAGNOSTIC FUNCTION

When the M/C has trouble, error message appears on the monitor automatically.

### OUTER COMMUNICATION FUNCTION

It is very convenient for operator to handle RS-232C

### EASY OPERATING FUNCTION

It is very convenient for the operator to handle M/C by operating software on panel and dualism with key board being established.

### ECONOMIC USAGE

The customer can reduce the cost of purchasing M/C because only one M/C because only one M/C can excute to insert three different kinds of components.

### TABLE TURNING FUNCTION

Each head can insert components at 4 direction

### 系统的可靠性

伺服和CAM控制系统, 高速插入和良好的稳定性。

### 监控功能

显示器可显示产品信息, 出错信息和各种可用操作信息。

### 编程功能

系统可在线编程, 操作者可便捷的通过PC进行输出、输入, 编辑和存储数据功能。

### 诊断功能

当机器出现故障时, 机器会自动的在显示器上显示出错信息, 以便于及时排除。

### 外部通讯功能

通过RS-232C接口, 可便捷的与外界通讯。

### 简单方便操作功能

操作者可在操作面板上方便的按照程序运行机器。  
通过操作软件, 操作者可方便的操控机器

### 经济实用

用户可使用一台机器处理最多三种不同类型的元器件以达到经济之目的, 节省采购成本。

### 工作台旋转功能

每个插入头以四个方向插入元器件

## MAIN SPECIFICATIONS

| NO  | Specification                           | Mulserter 2000T   |
|-----|---|---|
| 1.  | Applicable PCB Size(L×W)                | Min:100×80(mm)/Max.330×250(mm)  |
| 2.  | PCB Transfer Direction                  | L→ R / R → L  |
| 3.  | Insertion Speed                         | 0.23~0.35sec.<br>per component (variable as component)                            |
| 4.  | Table Speed                             | 22.5M per min.  |
| 5.  | PCB Loading Time                        | 5sec.   |
| 6.  | Component Kinds of Insertion applicable | Three kinds   |
| 7.  | Component Feeding Method                | Reel Feeding  |
| 8.  | Clinch                                  | Quadrisection/Hexasection or press fit  |
| 9.  | M/C color                               | White Gray or Blue  |
| 10. | M/C Dimension (L×W×H)                   | 2322(L) ×2100(W) ×2100(H)mm   |
| 11. | M/C Weight                              | 1200kg  |
| 12. | PC (as controller)                      | For industrial Usage: Pentium 4 2.8GHz<br>DSP Card, HDD 80GB<br>15" Color Monitor |
| 13. | Air Source                              | 5~6 kgf/cm2   |
| 14. | Air Consumption                         | 100Nℓ/ min  |
| 15. | Electric Power                          | 220V±10%/50~60Hz/4kw  |
| 16. | Temperature                             | 10℃~35℃   |
| 17. | Humidity                                | 30~70%  |
| 18. | LCS                                     | Automatic Coordinates<br>Collection System by Laserbeam                           |

## INSERTED FORM INTO PCB



## Automatic Boss Inserting Machine Mulserter-1000P 全自动Boss插件机Mulserter-1000P



Automatic Boss Inserting Machine, Model:MULSERTER-1000P automatically inserts a boss into the back plate of a PDP. It divides bosses which are provided through the parts feeder and automatically inserts them onto the back plate on an X-Y table, and it can process loading/unloading.

全自动Boss插件机, 型号: MULSERTER-1000P自动将Boss插入PDP背板。本装备通过送料器将Boss自动插入X-Y table上的Back plate, 并可自动实现装载/卸载。



# Mulserter-1000P

## Main Feature

### MONITORING FUNCTION

It displays the production information, trouble message, and other valuable operating information on the monitor.

### PROGRAM GENERATING FUNCTION

System makes the program by itself, and also the operator can easily output, input, edit and save the data with PC.

### DIAGNOSTIC FUNCTION

When the M/C has trouble, error message appears on the monitor automatically.

### OUTER COMMUNICATION FUNCTION

It is very convenient for operator to handle RS-232C

### EASY OPERATING FUNCTION

It is very convenient for the operator to handle M/C by operating software on panel and dualism with key board being established.

### ECONOMIC USAGE

The customer can reduce the cost of purchasing M/C because only one M/C can excute to insert four different kinds of components.

### 监控功能

显示器可显示产品信息, 出错信息和各种可用操作信息, 该机器提供更方便的触摸屏操作功能, 并另外安装了一个特殊开关供操作者在机使用。

### 编程功能

系统可在线编程, 操作者可便捷的通过PC进行输出、输入, 编辑和存储数据功能。

### 诊断功能

当机器出现故障时, 机器会自动的在显示器上显示出错信息, 以便于及时排除。

### 外部通讯功能

通过RS-232C接口, 可便捷的与外界通讯。

### 简单方便操作功能

通过操作软件, 操作者可方便的操控机器。

### 经济实用

用户可使用一台机器处理最多四种不同类型的元器件, 以达到经济之目的。

## MAIN SPECIFICATIONS

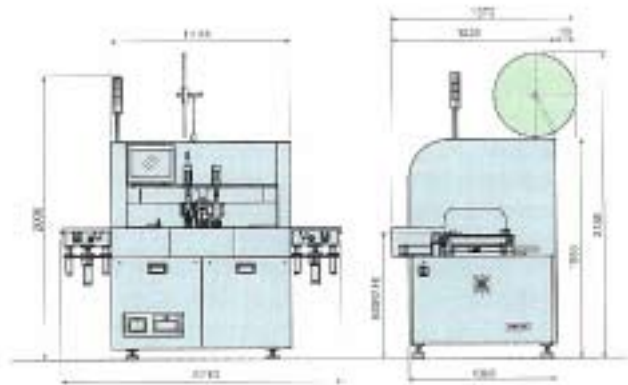
| NO  | Specification                           | Mulserter 1000P   |
|-----|---|---|
| 1.  | Applicable PAD CHASSISB Size(L×W)       | for PDP42"~ 57"(user option)  |
| 2.  | PCB Transfer Direction                  | L→ R / R → L  |
| 3.  | Insertion Speed                         | 0.6 sec. per component<br>(variable as component)                         |
| 4.  | Table Speed                             | 22.5M per min.  |
| 5.  | Loading Time                            | 7sec.   |
| 6.  | Component Kinds of Insertion applicable | Four kinds  |
| 7.  | Component Feeding Method                | Bowl Feeding  |
| 8.  | M/C color                               | White Gray or Blue  |
| 9.  | M/C Dimension (L×D×H)                   | 4460(L) ×2300(D) ×2128(H)mm   |
| 10. | M/C Weight                              | 2500kg  |
| 11. | PC (as controller)                      | PentiumIII-1GHz<br>DSP Card, HDD 80GB<br>14" TFT LCD Touch Screen Monitor |
| 12. | Air Source                              | 5~6 kgf/cm2   |
| 13. | Air Consumption                         | 656Nℓ/ min  |
| 14. | Electric Power                          | 220V±10%/50~60Hz/1.7kw  |
| 15. | Temperature                             | 10℃~35℃   |
| 16. | Humidity                                | 30~70%  |
| 17. | LCS                                     | Automatic Coordinates<br>Collection System by Laserbeam                   |

## INSERTED FORM INTO PCB

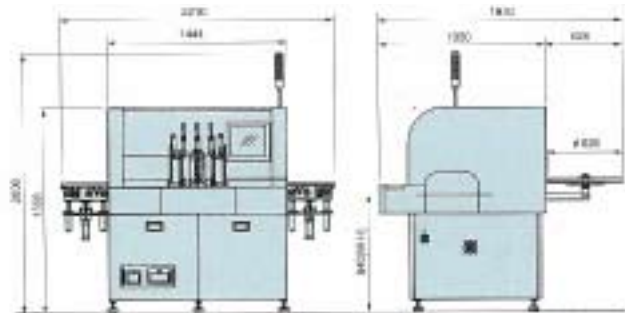


# DIMENSION

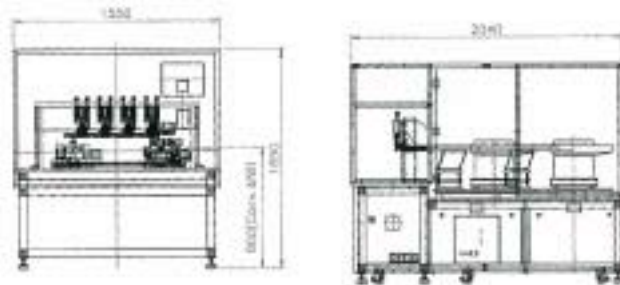
MULSERTER 200



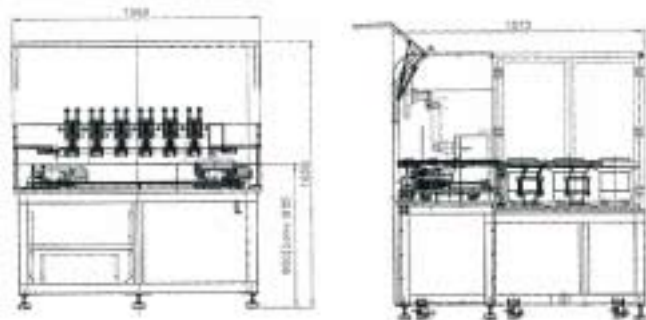
MULSERTER 300T



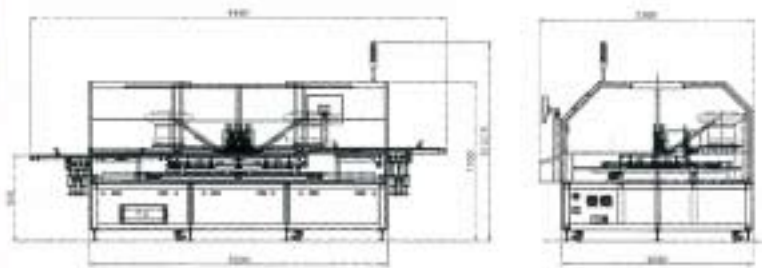
MULSERTER-2000S



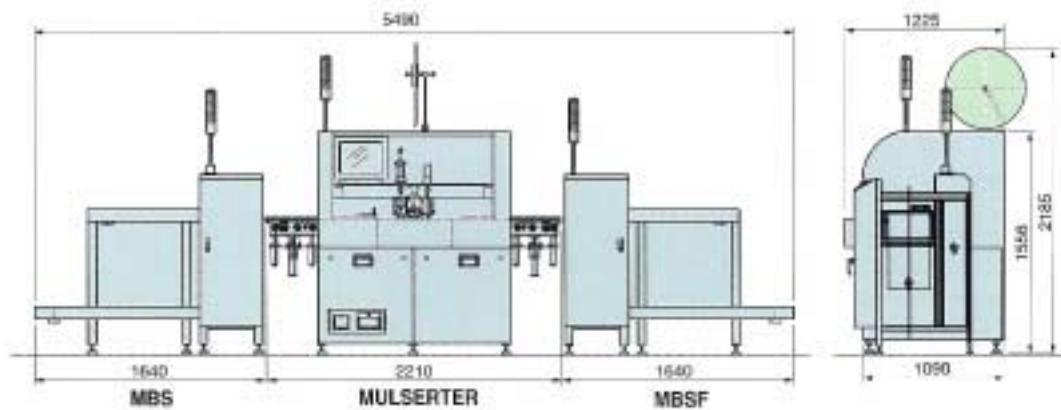
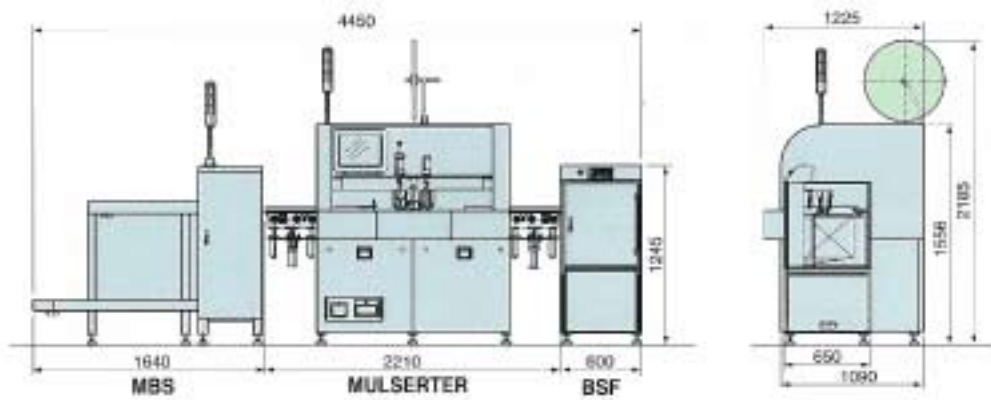
MULSERTER-2000M



## MULSERTER-1000P



## Layout



GATD(Hotline):86-21-24071575

E-mail: [tool.asia@tycoelectronics.com](mailto:tool.asia@tycoelectronics.com)

Web: [tooling.tycoelectronics.com](http://tooling.tycoelectronics.com)  
[tooling.tycoelectronics.com/china/](http://tooling.tycoelectronics.com/china/)  
[www.automation.tycoelectronics.com](http://www.automation.tycoelectronics.com)

#### China

SHANG HAI  
TEL: 86-21-24071588  
FAX: 86-21-24071599

HONG KONG  
TEL: 852-27351628  
FAX: 852-27350243

GUANG ZHOU  
TEL: 86-20-86693535  
FAX: 86-20-86679840

QING DAO  
TEL: 86-532-66777083  
FAX: 86-532-85026500

BEI JING  
TEL: 86-10-65693200  
FAX: 86-10-65693208

CHONG QING  
TEL: 86-23-89808860  
FAX: 86-23-89808865

WU HAN  
TEL: 86-27-85778391  
FAX: 86-27-85778390

SHEN ZHEN  
TEL: 86-755-25154700  
FAX: 86-755-25980416

CHANG CHUN  
TEL: 86-431-88964709  
FAX: 86-431-88961143

TAI BEI  
TEL: 886-2-87682788  
FAX: 886-2-87681866

#### Others

THAILAND  
TEL: 66-2-9550500  
FAX: 66-2-6550505

SINGAPORE  
TEL: 65-64820311  
FAX: 65-64821012

AUSTRALIA  
TEL: 61-2-95542612  
FAX: 61-2-95543859

JAPAN  
TEL: 44-900-5027  
FAX: 44-900-5037

KOREA  
TEL: 82-2-3415-4636  
FAX: 82-2-3488-6873

MALAYSIA  
TEL: 603-7805-3055  
FAX: 603-7805-2815

AMP and Tyco Electronics are trademarks.

Other Products, Logo, and Company Names mentioned herein may be trademarks of their respective owners.

Do not have to reprint 6-1773452-9

#### Disclaimer

While Tyco Electronics has made every reasonable effort to ensure the accuracy of the information in this catalog, Tyco Electronics does not guarantee that it is error-free, nor does Tyco Electronics make any other representation, warranty or guarantee that the information is accurate, correct, reliable or current.

Tyco Electronics reserves the right to make any adjustments to the information contained herein at any time without notice. Tyco Electronics expressly disclaims all implied warranties regarding the information contained herein, including, but not limited to, any implied warranties of merchantability or fitness for a particular purpose.

The dimensions in this catalog are for reference purposes only and are subject to change without notice. Specifications are subject to change without notice. Consult Tyco Electronics for the latest dimensions and design specifications.



# Tyco Electronics

Our commitment. Your advantage.



